

BINDURA UNIVERSITY OF SCIENCE EDUCATION

FACULTY OF SCIENCE AND ENGINEERING

AEH 101/EEN 1102

Department of Engineering and Physics

Bachelor of Science (Honours) Degree in Agricultural Engineering

Bachelor of Science (Honours) Degree in Electronic Engineering

Engineering Drawing

4 hours (100 Marks)

Instructions:

1. This paper contain 5 questions. Each question carries 25 marks.
2. Answer all question in section A and two questions in section B.
3. All the drawings must be drawn on A3 drawing paper and choose an appropriate scale for the drawings.
4. All dimensions are in millimeters.

Section A: answer all questions.

Question 1.

- | | |
|---|------------|
| a. State two essential aspects that a good drawing must meet. | [10 marks] |
| b. Mention three types of technical drawing. | [15 marks] |

Question 2.

Fig. Q2 shows a shaft support, draw using the first angle system:

- the sectional view from the front with dimensioning and, [15 marks]
- the top view with dimensioning. [10 marks]

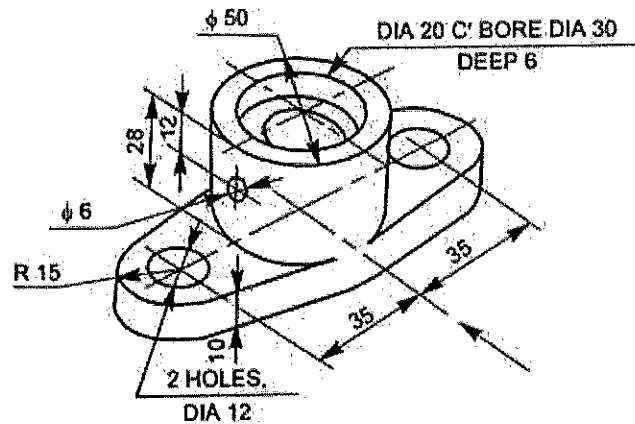


Fig. Q2.

Section B: answer two questions.

Question 3.

Assemble the parts of a knuckle joint, shown in Fig. Q3 and draw:

- Sectional view from the front and, [15 marks]
- View from above component. [10 marks]

Part list:

Nr.	Name	Quantity
1	Fork end	1
2	Eye end	1
3	Pin	1
4	Collar	1
5	Taper pin	1

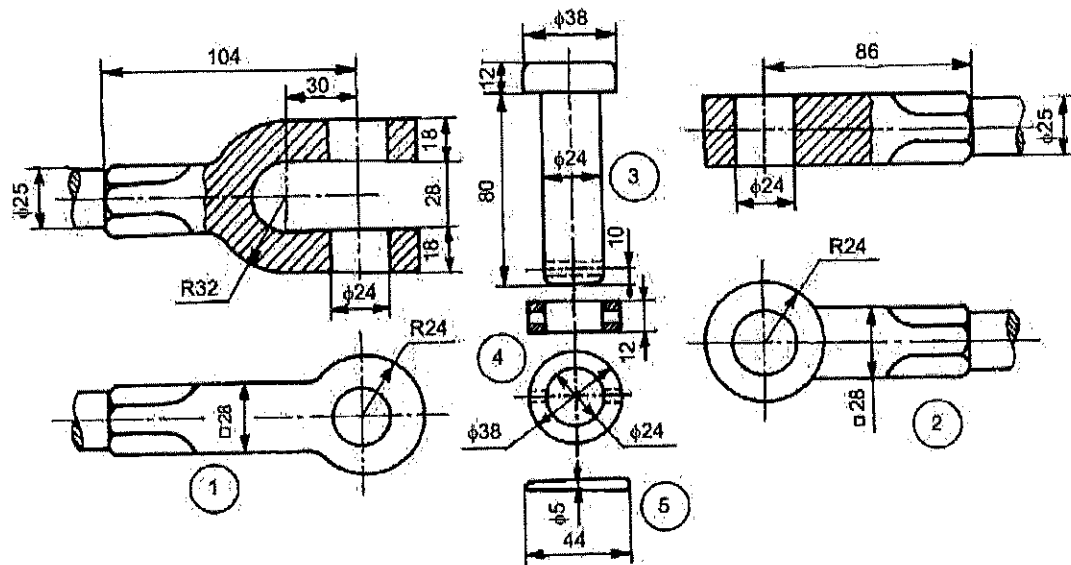


Fig. Q3.

Question 4.

Draw the following diagram in fig. Q4 with dimensioning.

[25 marks]

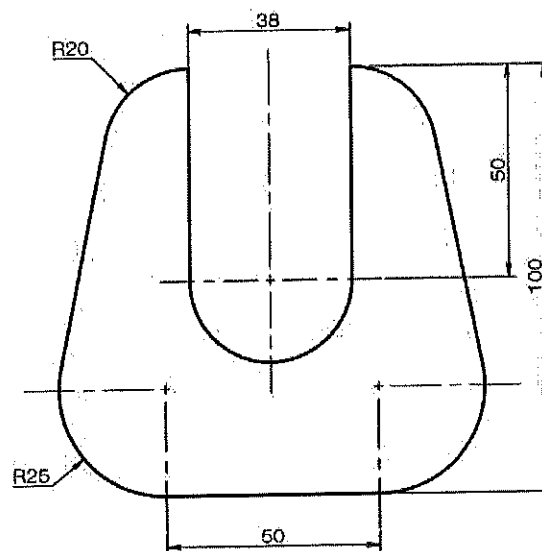


Fig. Q4.

Question 5.

Draw the isometric projection of the object shown on Fig. Q5.

[25 marks]

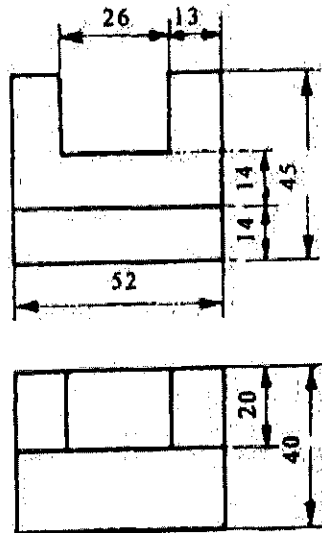


Fig. Q5.