

BINDURA UNIVERSITY OF SCIENCE EDUCATION

FACULTY OF SCIENCE AND ENGINEERING

DEPARTMENT: SPORTS SCIENCE

**PROGRAMME: BACHELOR OF SCIENCE HONORS DEGREE IN SPORTS SCIENCE AND
MANAGEMENT**

COURSE CODE SSM227: COURT SPORTS (TENNIS)

DURATION: 3 HOURS

TOTAL MARKS: 100

JUN 2022

INSTRUCTIONS TO CANDIDATES

Answer the two questions from section A and two questions from section B.

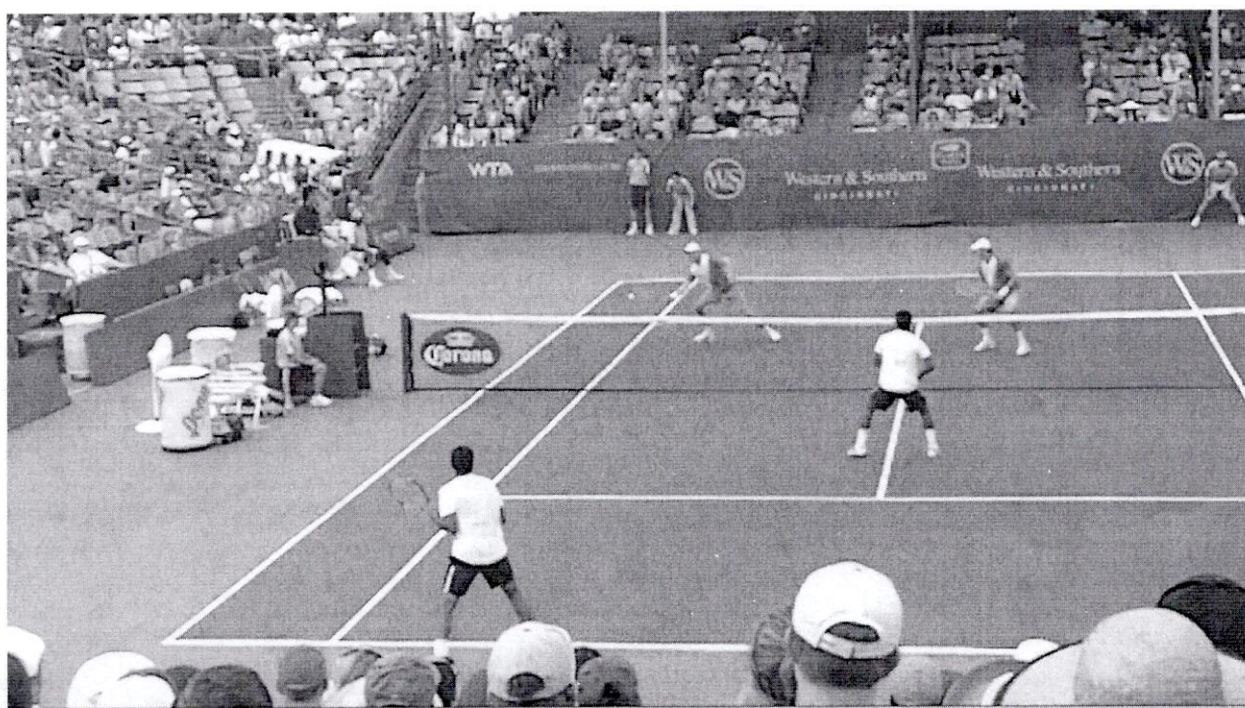
Section A

1. Draw and label a tennis court. (20 Marks)
2. Describe the three different types of :
 - i. Tennis courts surfaces (12 Marks)
 - ii. Three different types of tennis balls according to level of expertise. (8 Marks)
3. Discuss the coaching methodology of any two techniques in tennis. (20 Marks)

Section B

4. Explain six of the technique drills that can enhance performance in tennis, with the aid of diagrams. (30 Marks)
5. Two-thirds of tennis injuries are due to overuse and the other third is due to traumatic injury or acute event.

- i. Task : Explain two injuries due to over use and one caused by traumatic injury. (15 Marks)
 - ii. Suggest the immediate procedures of the treatment of the above injuries. (15 Marks)
6. Discuss what you see on the diagram below in relation to the game and rules of tennis. (30 Marks)



END OF PAPER