

BINDURA UNIVERSITY OF SCIENCE EDUCATION
SCIENCE & MATHEMATICS EDUCATION DEPARTMENT
DIPLOMA IN SCIENCE EDUCATION-SCIENCES (DipScEdSc)
ANIMAL SCIENCE (DB002) (7) EXAMINATION

DURATION: 2 HOURS

100 MARKS

INSTRUCTIONS TO CANDIDATES

Answer FOUR questions. You MUST answer QUESTION 1 (Section A) and any THREE questions from section B. Each question carries 25 MARKS. Where a question contains sub-divisions, the mark value of each sub-division is given in brackets. Illustrate your answer where appropriate with large clearly labelled diagrams. You should not spend more than thirty minutes on each question.

SECTION A (COMPULSORY)

MAR 2024

1. Fig. 1.1 shows parts of the endocrine system.

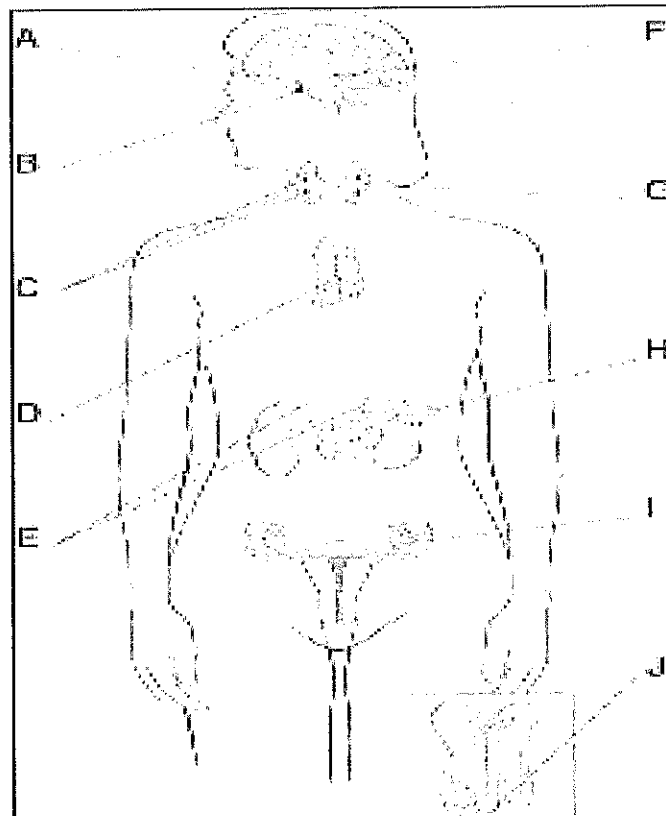


Fig. 1.1 Endocrine system

- (a) Name the endocrine glands labelled A to J. (10 marks)
- (b) Outline the main functions of the endocrine system. (15 marks)

SECTION B

2. Outline the structure and function of the nervous system.
3. Describe the structure and function of the mammalian heart.
4. Outline the functions of the following parts of the human digestive system:
 - (a) Oesophagus. (6 marks)
 - (b) Small intestine. (13 marks)
 - (c) Large intestine. (6 marks)
5. Describe the structure and function of the kidney in the urinary system.
6. Outline the functions of the following parts of the human reproductive system:
 - (i) Ovaries (8 marks)
 - (ii) Testes (8 marks)
- (b) Describe the characteristics of any one Phylum in the Animal Kingdom (9 marks)

END OF EXAMINATION QUESTION PAPER