

BINDURA UNIVERSITY OF SCIENCE EDUCATION  
SCIENCE & MATHEMATICS EDUCATION DEPARTMENT  
HBScEd  
DIVERSITY OF LIFE 1 (BZH101)

AUG 2024

EXAMINATION  
2 HOURS (100 MARKS)

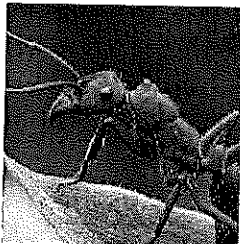
**INSTRUCTIONS**

Answer **FOUR** questions. You **MUST** answer QUESTION 1 (Section A) and any **THREE** questions from Section B. Each question carries **25 MARKS**. Where a question contains subdivisions, the mark value of each subdivision is given in brackets. Illustrate your answers, where appropriate, with large, clearly labelled diagrams. You should not spend more than thirty minutes on each question.

**SECTION A (COMPULSORY)**

1. Classify the following organisms into kingdom, phylum and class

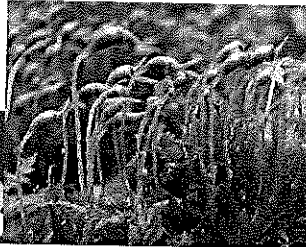
(a)



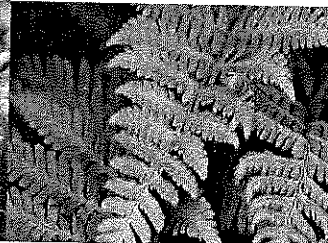
(b)



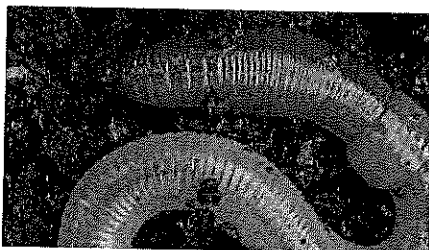
(c)



(d)



(e)



(15 marks)

(b) Identify any two diagnostic features of the above organisms that make them belong to their phylum. (10 marks)

## **SECTION B**

2. Identify features of prokaryotes and discuss their socio-economic importance.
3. Write an essay on the kingdom Protista.
4. Write short notes on any **FIVE** of the following:
  - (a) Archaeobacteria. (5 marks)
  - (b) Kingdom Monera. (5 marks)
  - (c) Hierarchy of classification. (5 marks)
  - (d) Linnaean classification. (5 marks)
  - (e) Phylogeny. (5 marks)
  - (f) Phylum porifera. (5 marks)
5. Discuss the extent to which bryophytes have adapted to life on land.
6. Discuss the economic importance of biodiversity.

**END OF EXAMINATION QUESTION PAPER**